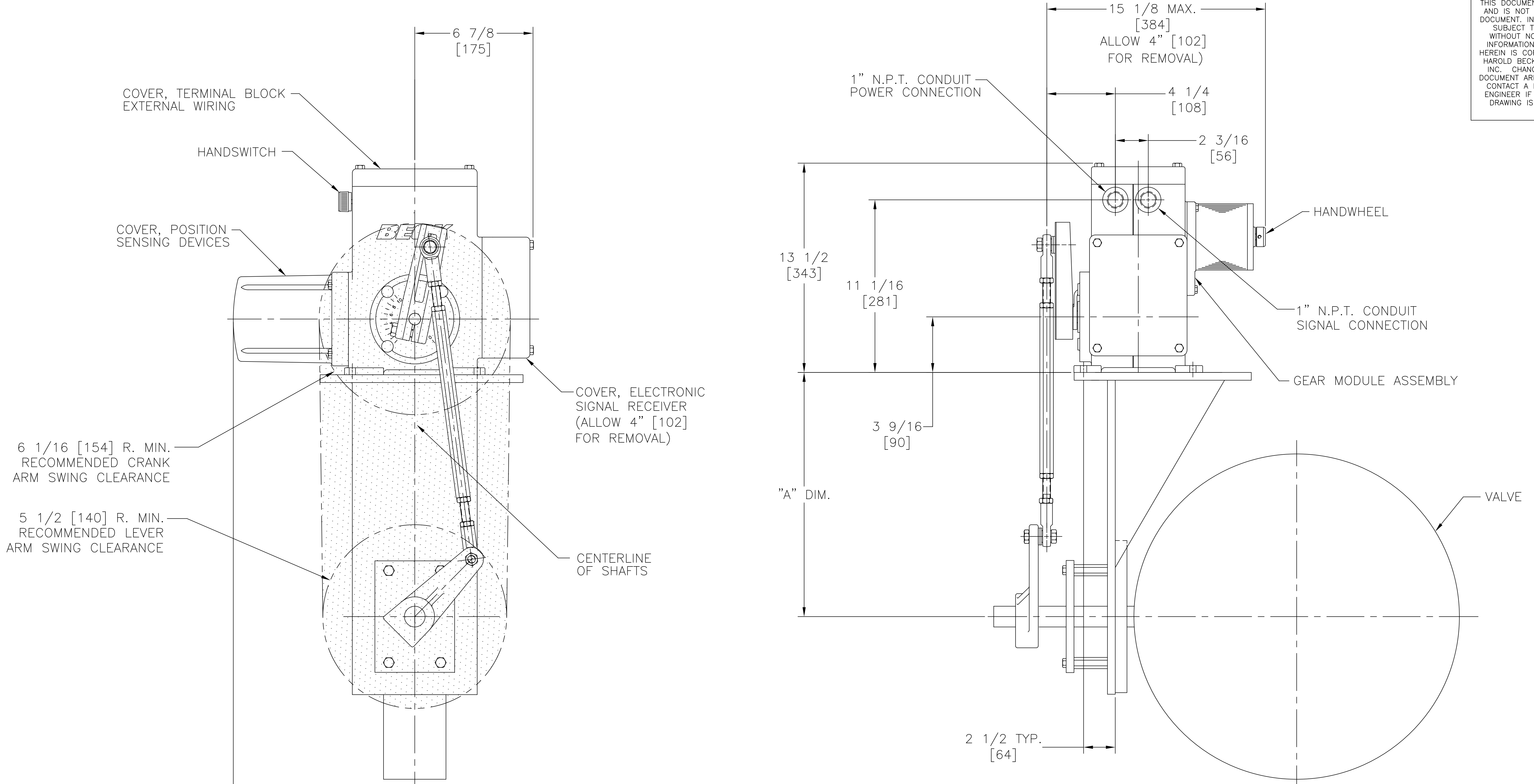


THIS DOCUMENT IS A COPY AND IS NOT THE SOURCE DOCUMENT. INFORMATION IS SUBJECT TO CHANGE WITHOUT NOTICE. THE INFORMATION CONTAINED HEREIN IS COPYRIGHTED BY HAROLD BECK AND SONS, INC. CHANGES TO THE DOCUMENT ARE PROHIBITED. CONTACT A BECK SALES ENGINEER IF A CERTIFIED DRAWING IS REQUIRED.



6 1/16 [154] R. MIN. RECOMMENDED CRANK ARM SWING CLEARANCE

5 1/2 [140] R. MIN. RECOMMENDED LEVER ARM SWING CLEARANCE

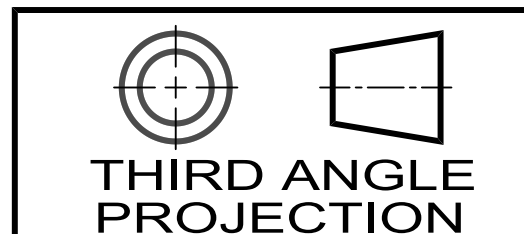
11 5/8 [295] (ALLOW 6\" [152] FOR REMOVAL)

ALL DIMENSIONS ARE IN INCHES AND [MM] UNLESS OTHERWISE SPECIFIED. THREADS AND TAPPED HOLES ARE SPECIFIED AS UNIFIED THREAD SIZES ONLY. CONDUIT PIPE THREADS PER AMERICAN NATIONAL STANDARD TAPER PIPE THREADS (N.P.T.)

NOTES:
 ALL DIMENSIONS ARE TYPICAL
 TOLERANCES: ±1/4 [±6]
 IF SPECIFIC DIMENSIONS ARE REQUIRED, PLEASE CONTACT A FACTORY REPRESENTATIVE
 SCREW TORQUES FOR MOUNTING HARDWARE WILL BE SUPPLIED WITH SPECIFIC VMS.

VALVE SIZE	3"	4"	6"	8"	10"	12"
"A" DIM	8-1/2 [216]	8-1/2 [216]	8-1/2 [216]	8-1/2 [216]	8-1/2 [216]	8-1/2 [216]

RECOMMENDED SCREW TORQUES			
	SIZE (IN.)	TORQUE (LB-FT)	TORQUE (Nm)
CRANK ARM SCREW	1/2-13	75	102
ROD END SCREW	1/2-13	35	47
ROD END LOCK NUT	1/2-13	55	75
COVER SCREWS	5/16-18	10	14
MOTOR/GEAR MODULE SCREWS	1/4-20	6	8
BODY SCREWS	5/16-18	10	14
BODY SCREWS	3/8-16	20	27



18-0150-02o

HAROLD BECK & SONS INC
 NEWTOWN INDUSTRIAL COMMONS NEWTOWN, PENNSYLVANIA 18940 USA

TITLE: **OUTLINE DIMENSIONS FOR UNITIZED ASSEMBLIES OF BECK 11-150 DRIVES & TYPICAL BUTTERFLY & BALL VALVES**

DRAWN: DMAS 12-20-10	SCALE: NONE	DRAWING NO: 18-0150-02o	REV: F
CHECKED: GMD 12-22-10		SHEET NO. 1 OF 1	
APPROVED: HHS 12-22-10			