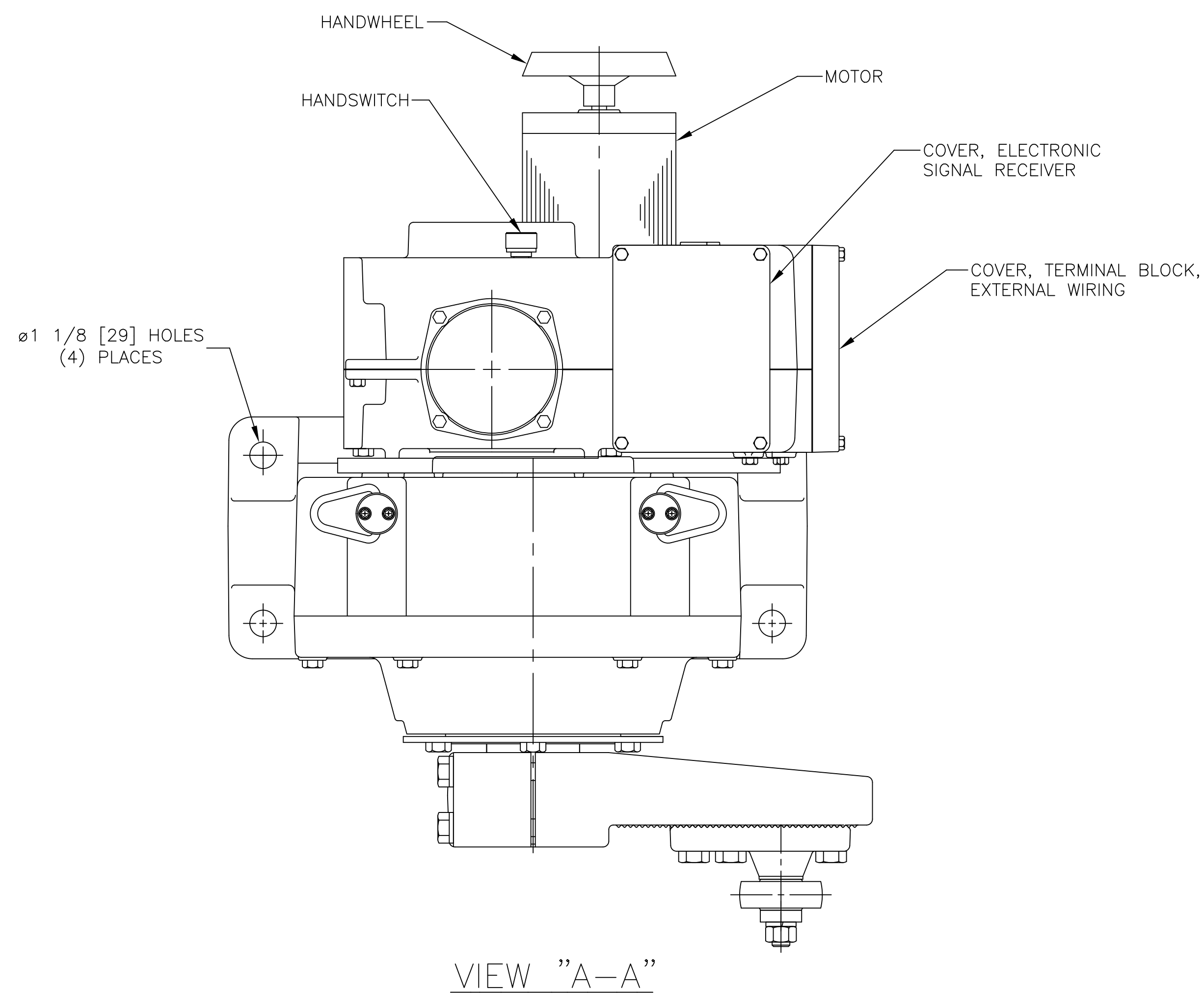


THIS DOCUMENT IS A COPY AND IS NOT THE SOURCE DOCUMENT. INFORMATION IS SUBJECT TO CHANGE WITHOUT NOTICE. THE INFORMATION CONTAINED HEREIN IS COPYRIGHTED BY HAROLD BECK AND SONS, INC. CHANGES TO THE DOCUMENT ARE PROHIBITED. CONTACT A BECK SALES ENGINEER IF A CERTIFIED DRAWING IS REQUIRED.



RECOMMENDED SCREW TORQUES

GEAR REDUCTION UNIT	THREAD SIZE	TORQUE LB-FT.	TORQUE Nm
CRANK ARM CLAMP SCREWS (4)	3/4-16	420	569
ROD END NUT	3/4-16	200	271
CRANK PIN SCREWS (3) (14-8022-42 CRANKARM)	3/4-16	420	569
CRANK PIN SCREWS (3) (14-8022-44 CRANKARM)	3/4-16	300	407
11-400			
	THREAD SIZE	TORQUE LB-FT.	TORQUE Nm
COVER SCREWS	5/16-18	10	14
MOTOR SCREWS	3/8-16	16	22
GEAR MODULE SCREWS	5/16-18	10	14
ADAPTOR PLATE TO GEAR REDUCTION UNIT SCREWS (4)	1/2-13	45	61

SIZE:
D

UNLESS OTHERWISE SPECIFIED		HAROLD BECK & SONS INC	
ALL DIMENSIONS ARE IN INCHES DIMENSIONS AND TOLERANCES PER ANSI Y14.5M DIMENSIONAL TOLERANCES:		NEWTOWN INDUSTRIAL COMMONS NEWTOWN, PENNSYLVANIA 18940 USA	
FRACTIONAL: ±1/64 DECIMAL: .XX = ± .010 .XXX = ± .005 .XXXX = ± .0005 ° = ± 1° ANGLES: ° = ± 5° RADIUS: .040 MAX. RADIUS WHERE A DIAMETER IS BORED OR TURNED TO A SHOULDER GEARING: AGMA QUALITY LEVEL B THREADS: SCREW: CLASS 2A - EXTERNAL CLASS 2B - INTERNAL PIPE: AMERICAN NATIONAL STANDARD MACHINED SURFACE FINISH: .250 RMS MACHINED DIAMETERS ON THE SAME CENTERLINE TO BE CONCENTRIC WITHIN .005 T.I.R. REMOVE ALL BURRS AND SHARP EDGES. MAXIMUM .020 RADIUS OR CHAMFER		TITLE: OUTLINE DIMENSIONS BECK 11-430 DRIVE ORIENTATION OPTION "A"	
DRAWN: DVK 10-30-07	SCALE: NONE	DRAWING NO: 18-0430-01o	REV: J
CHECKED: DMS 11-6-07	APPROVED: JHM 11-7-07	SHEET NO. 2 OF 2	

18-0430-01o