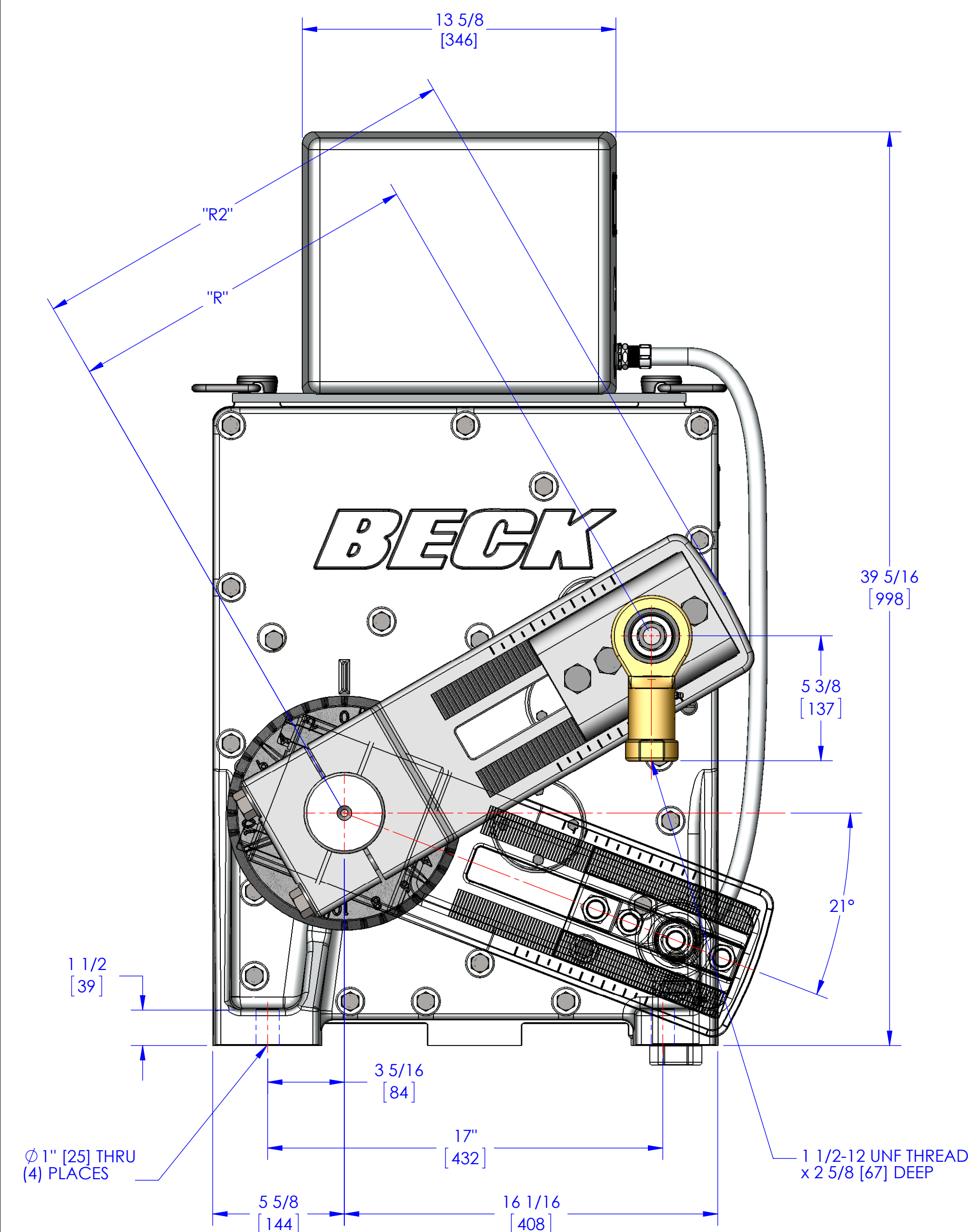
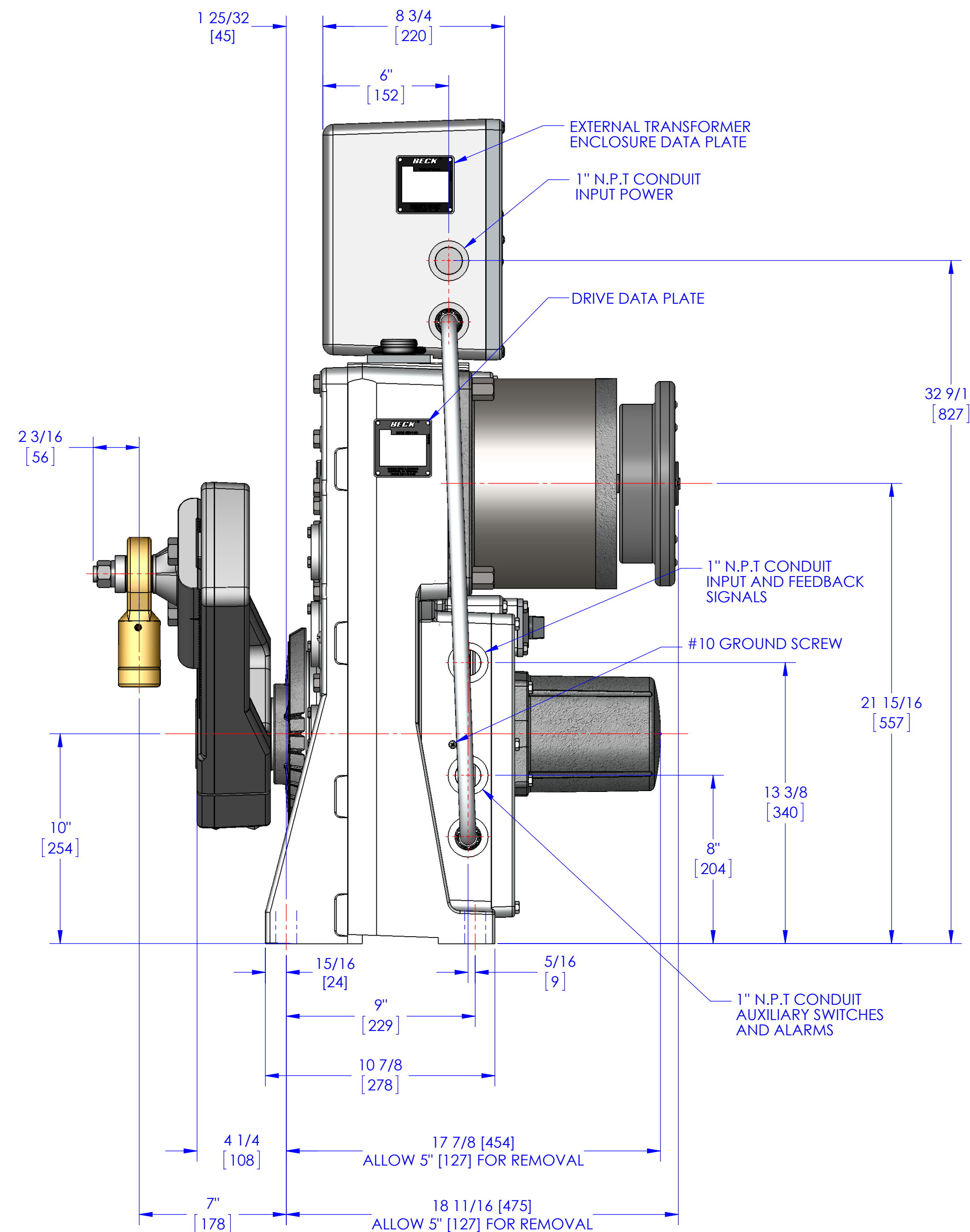


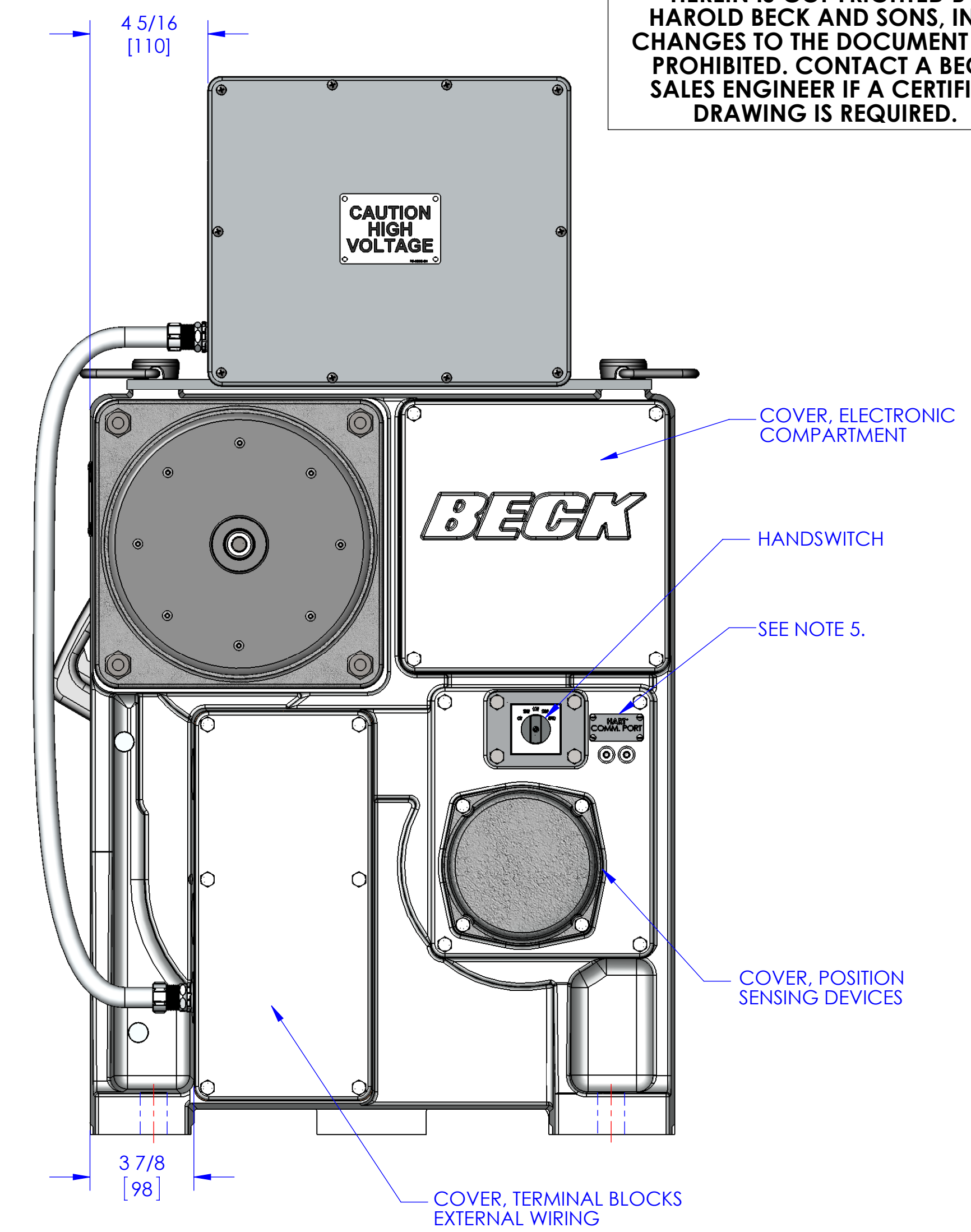
THIS DOCUMENT IS A COPY AND IS NOT THE SOURCE DOCUMENT. INFORMATION IS SUBJECT TO CHANGE WITHOUT NOTICE. THE INFORMATION CONTAINED HEREIN IS COPYRIGHTED BY HAROLD BECK AND SONS, INC. CHANGES TO THE DOCUMENT ARE PROHIBITED. CONTACT A BECK SALES ENGINEER IF A CERTIFIED DRAWING IS REQUIRED.



FRONT VIEW



SIDE VIEW



REAR VIEW

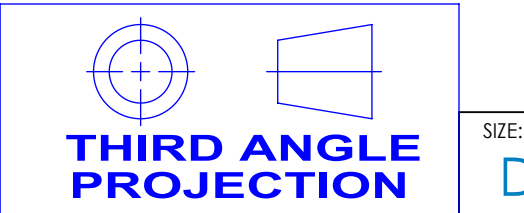
- NOTES:**
1. ALL DIMENSIONS ARE TYPICAL
 2. TOLERANCES: ±1/4 [±6]
 3. MOUNTING DIMENSIONS: ±1/16 [±2]
 4. IF SPECIFIC DIMENSIONS ARE REQUIRED, PLEASE CONTACT A FACTORY REPRESENTATIVE.
 5. REFERENCE LOCATION FOR HART COMMUNICATION PORT LABEL WHEN HART COMMUNICATION DRIVE OPTION IS SPECIFIED.

FASTENER GUIDE

	SIZE (IN.)	TORQUE LB-FT./Nm
CRANK ARM SCREWS (4)	3/4-16	420/569
CRANK PIN SCREWS (3)	3/4-16	300/407
ROD END NUT	3/4-16	200/271
MOTOR MOUNTING NUTS (4)	1/2-13	37/50
ELECTRONICS COMPARTMENT COVER	5/16-18	10/14
TERMINAL COMPARTMENT COVERS	5/16-18	10/14
CONTROL END COVER	5/16-18	10/14

ALL DIMENSIONS ARE IN INCHES AND [MM] UNLESS OTHERWISE SPECIFIED. THREADS AND TAPPED HOLES ARE SPECIFIED AS UNIFIED THREAD SIZES ONLY. CONDUIT PIPE THREADS PER AMERICAN NATIONAL STANDARD TAPER PIPE THREADS (N.P.T.)

BECK DRIVE MODEL NO.	TORQUE LB-FT [N-m]	MAXIMUM OVERHUNG LOAD LBS. [KGS.]	TIMING SEC/100°	NET WT. LBS. [KGS.]	OUTPUT SHAFT DIA. IN. [MM]	CRANKARM ASSEMBLY NUMBER	CRANKARM RADIUS (ADJUSTABLE) "R" DIM.	CRANKARM RADIUS "R2" DIM.
22-400	4000 [5423]	15000 [6804]	15	540 [245]	3 1/2 [89]	14-8022-12	9 TO 15 [229-381]	18-7/8 [480]
						14-8022-62	6-1/2 TO 10 [165-254]	14-3/8 [365]



HAROLD BECK & SONS INC.
NEWTOWN INDUSTRIAL COMMONS NEWTOWN, PENNSYLVANIA 18940 USA

TITLE:
OUTLINE DIMENSIONS FOR UNITIZED ASSEMBLY OF BECK 22-400 DRIVE AND EXTERNAL TRANSFORMER ENCLOSURE

DRAWN: DMS 11-30-12	SCALE: NONE	DRAWING NO: 18-2240-05o	REV: F
CHECKED: DWK 11-30-12			
APPROVED: HHS 11-30-12		SHEET NO. 1 OF 1	