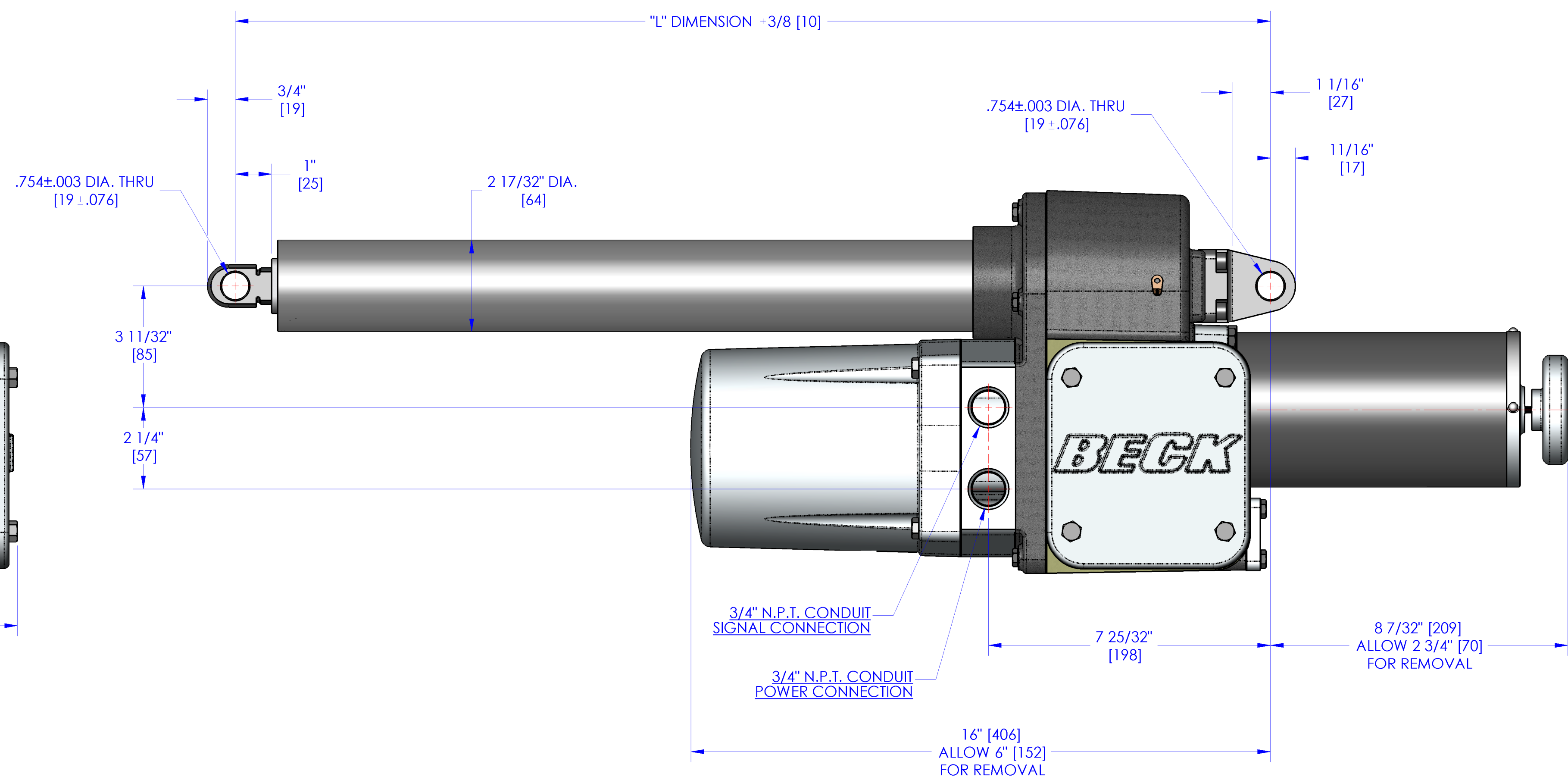
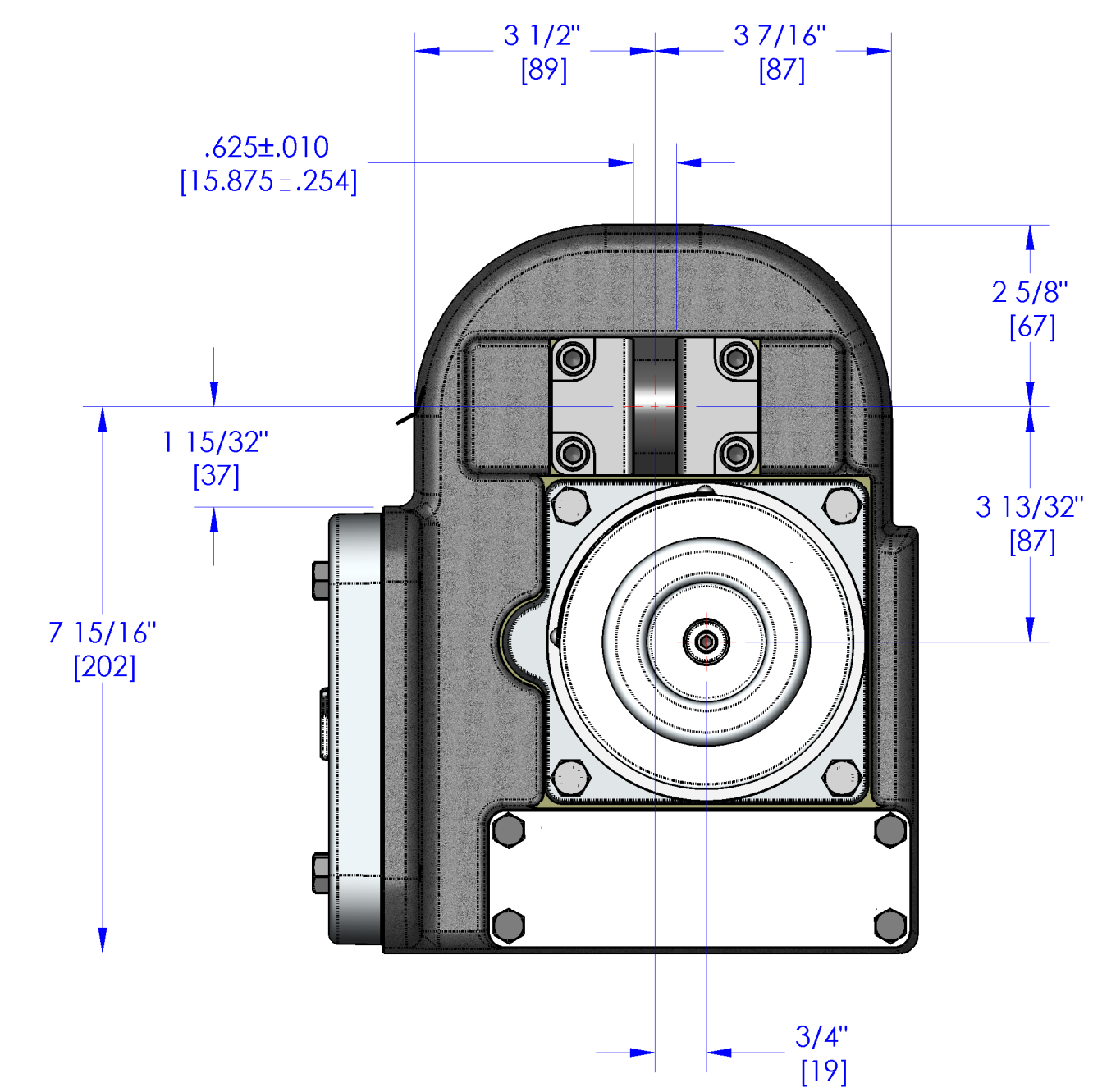


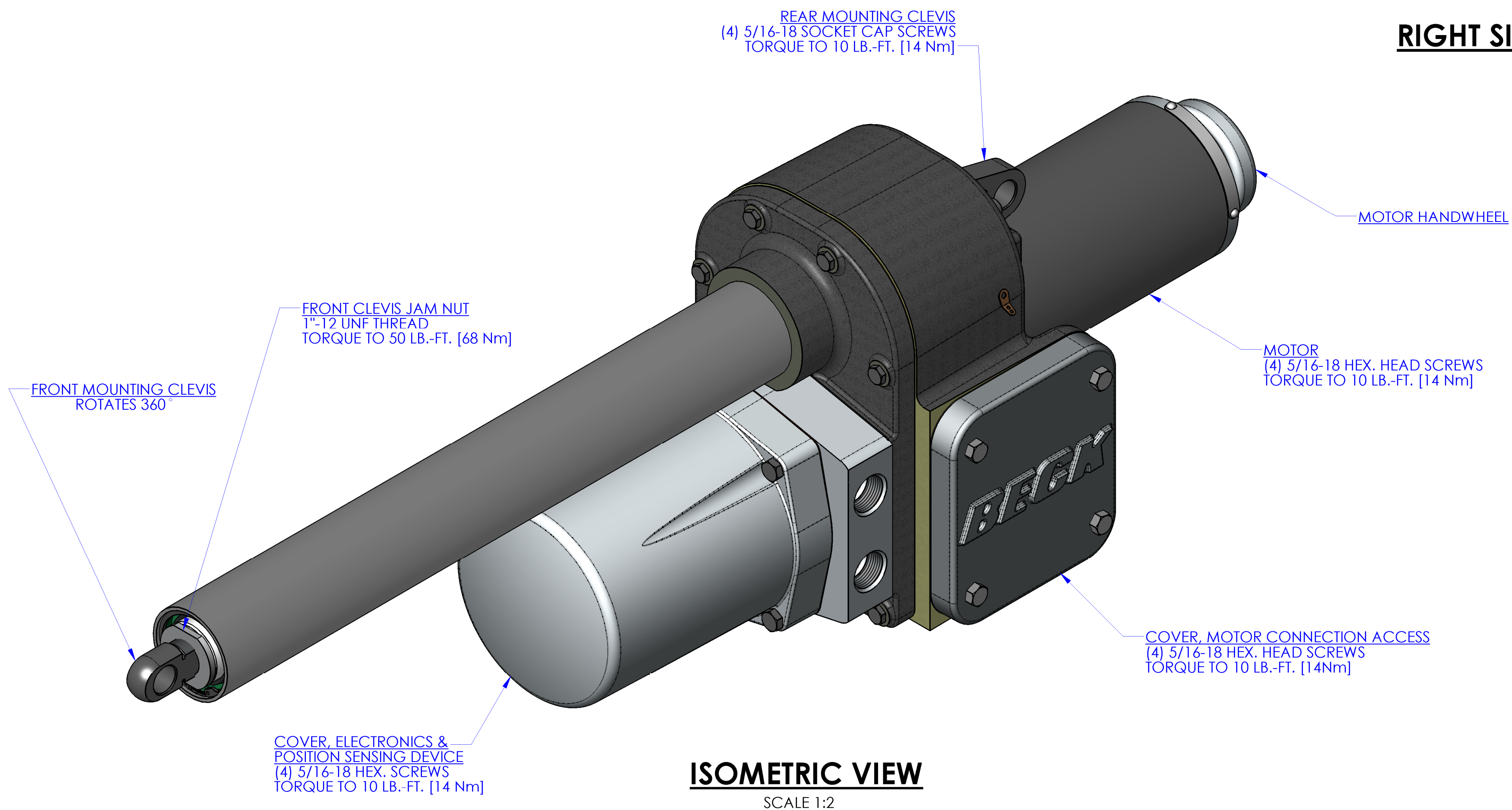
FRONT VIEW



RIGHT SIDE VIEW



REAR VIEW



ISOMETRIC VIEW

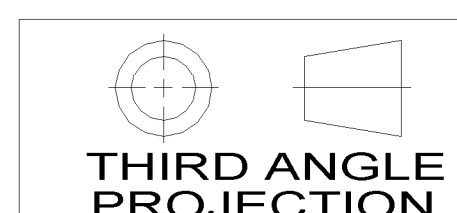
SCALE 1:2

NOTES:

1. TOLERANCE - ±1/4 [±6] UNLESS OTHERWISE SPECIFIED.
2. ALL DIMENSIONS ARE IN INCHES AND [MM] UNLESS OTHERWISE SPECIFIED. THREADS AND TAPPED HOLES ARE SPECIFIED AS UNIFIED THREAD SIZES ONLY. CONDUIT PIPE THREADS PER AMERICAN NATIONAL STANDARD TAPER PIPE THREADS (N.P.T.)

DRIVE TRAVEL	"L" DIM. FULLY RETRACTED	"L" DIM. FULLY EXTENDED	120 VOLT APPROX. WT. LBS./KGS.
8" [203]	18 19/32" [472]	26 19/32" [675]	64/29
12" [305]	22 19/32" [574]	34 19/32" [879]	66/30
18" [457]	28 19/32" [726]	46 19/32" [1183]	69/31

18-4217-01o



THIRD ANGLE PROJECTION

HAROLD BECK & SONS INC.

NEWTOWN INDUSTRIAL COMMONS NEWTOWN, PENNSYLVANIA 18940 USA

TITLE:
OUTLINE DIMENSIONS BECK GROUP 42 DRIVE
42-103, 42-105 & 42-107

DRAWN: CHH 9-1-05	SCALE: NONE	DRAWING NO: 18-4217-01o	REV: D
CHECKED: BDP 9-9-05		SHEET NO. 1 OF 1	
APPROVED: JHM 9/9/05			