



REPLACEMENT INSTRUCTIONS

CONTROL END FUSE REPLACEMENT KIT P/N 12-8064-12

PURPOSE

The purpose of these instructions is to provide the field maintenance technician with a step-by-step method for replacing the control end fuse on Beck Group 42, control option 7 and 5 drives.

REQUIRED TOOLS

- 1/2" socket or wrench
- Scotch™ 847 gasket adhesive or equivalent
- Torque wrench appropriate for 10 lb-ft

WARNING

Electrical shock hazard—disconnect power before proceeding. Remove the drive from line voltage and shut off any external power sources feeding the auxiliary switches.

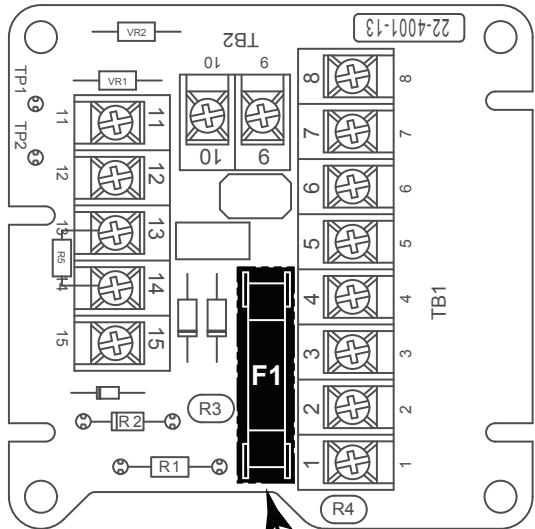
PROCEDURE

Refer to Figure 1 for component identification.

1. Remove power from the drive.
2. Remove the control end cover by loosening the (4) 5/16-18 hex head captive screws.
3. Locate the fuse on the terminal board of the control end.
4. Use a small screw driver to lift off the cover.
5. Remove and replace the fuse and replace the cover.
6. Inspect the control end cover gasket and replace, if necessary. If the gasket is in good condition, skip to step 10.
7. Clean the mating face on the drive body and the cover to remove all gasket material and adhesive. Ensure that the surfaces are free of defects, such as dents or gouges.
8. Apply a thin film of gasket adhesive (Scotch™ 847 or equivalent) to the mating face of the drive.
9. Firmly press the new gasket into place and allow time for the adhesive to set before continuing.
10. Connect power to the drive.
11. Modulate the Demand signal to run the drive through its full range of motion. Verify the correct drive response.
12. Modulate the signal to several intermediate levels and note if the drive attains the proper position.
13. If the drive responds correctly, reinstall the control end cover, tighten the (4) 5/16-18 hex head captive screws to 10 lb-ft torque, and return the drive to service.
14. If the drive does not respond correctly, refer to the troubleshooting and calibration sections of Beck Instruction Manual 80-0042-00.

Table 1: Control End Fuse Replacement Kit

Part Number	Description
11-1370-10	Fuse, 3A
10-8080-02	Control End Gasket



**FUSE &
FUSE COVER**

TERMINAL BOARD (OPTION 7 SHOWN)

Figure 1